


Inaccurate recognition of own comorbidities is associated with poor prognosis in elderly patients with heart failure

Daichi Maeda^{1,2}, Yuya Matsue^{1,3*} , Nobuyuki Kagiya^{4,5,6}, Kentaro Jujo⁷, Kazuya Saito⁸, Kentaro Kamiya⁹, Hiroshi Saito^{1,10}, Yuki Ogasahara¹¹, Emi Maekawa¹², Masaaki Konishi¹³, Takeshi Kitai^{14,15}, Kentaro Iwata¹⁵, Hiroshi Wada¹⁶, Masaru Hiki¹, Taishi Dotare¹, Tsutomu Sunayama¹, Takatoshi Kasai^{1,3}, Hirofumi Nagamatsu¹⁷, Tetsuya Ozawa¹⁸, Katsuya Izawa¹⁹, Shuhei Yamamoto²⁰, Naoki Aizawa²¹, Ryusuke Yonezawa²², Kazuhiro Oka²³, Shin-ichi Momomura²⁴ and Tohru Minamino^{1,25}

¹Department of Cardiovascular Biology and Medicine, Juntendo University Graduate School of Medicine, 2-1-1 Hongo, Bunkyo-ku, Tokyo, 113-8421, Japan; ²Department of Cardiology, Osaka Medical and Pharmaceutical University, Takatsuki, Japan; ³Cardiovascular Respiratory Sleep Medicine, Juntendo University Graduate School of Medicine, Tokyo, Japan; ⁴Department of Cardiology, The Sakakibara Heart Institute of Okayama, Okayama, Japan; ⁵Department of Digital Health and Telemedicine R&D, Juntendo University, Tokyo, Japan; ⁶Department of Cardiovascular Biology and Medicine, Juntendo University Faculty of Medicine, Tokyo, Japan; ⁷Department of Cardiology, Nishiarai Heart Center Hospital, Tokyo, Japan; ⁸Department of Rehabilitation, The Sakakibara Heart Institute of Okayama, Okayama, Japan; ⁹Department of Rehabilitation, School of Allied Health Sciences, Kitasato University, Sagami-hara, Japan; ¹⁰Department of Rehabilitation, Kameda Medical Center, Kamogawa, Japan; ¹¹Department of Nursing, The Sakakibara Heart Institute of Okayama, Okayama, Japan; ¹²Department of Cardiovascular Medicine, Kitasato University School of Medicine, Sagami-hara, Japan; ¹³Division of Cardiology, Yokohama City University Medical Center, Yokohama, Japan; ¹⁴Department of Cardiovascular Medicine, National Cerebral and Cardiovascular Center, Osaka, Japan; ¹⁵Department of Rehabilitation, Kobe City Medical Center General Hospital, Kobe, Japan; ¹⁶Department of Cardiovascular Medicine, Saitama Medical Center, Jichi Medical University, Saitama, Japan; ¹⁷Department of Cardiology, Tokai University School of Medicine, Isehara, Japan; ¹⁸Department of Rehabilitation, Odawara Municipal Hospital, Odawara, Japan; ¹⁹Department of Rehabilitation, Kasukabe Chuo General Hospital, Kasukabe, Japan; ²⁰Department of Rehabilitation, Shinshu University Hospital, Matsumoto, Japan; ²¹Department of Cardiovascular Medicine, Nephrology and Neurology, University of the Ryukyus, Okinawa, Japan; ²²Rehabilitation Center, Kitasato University Medical Center, Kitamoto, Japan; ²³Department of Rehabilitation, Saitama Citizens Medical Center, Saitama, Japan; ²⁴Saitama Citizens Medical Center, Saitama, Japan; and ²⁵Japan Agency for Medical Research and Development-Core Research for Evolutionary Medical Science and Technology (AMED-CREST), Japan Agency for Medical Research and Development, Tokyo, Japan

Abstract

Aims A patient's understanding of his or her own comorbidities is part of the recommended patient education for those with heart failure. The accuracy of patients' understanding of their comorbidities and its prognostic impact have not been reported.

Methods and results Patients hospitalized for heart failure ($n = 1234$) aged ≥ 65 years (mean age: 80.1 ± 7.7 years; 531 females) completed a questionnaire regarding their diagnoses of diabetes, malignancy, stroke, hypertension, chronic obstructive pulmonary disease (COPD), and coronary artery disease (CAD). The patients were categorized into three groups based on the number of agreements between self-reported comorbidities and provider-reported comorbidities: low (1–2, $n = 19$); fair (3–4, $n = 376$); and high (5–6, $n = 839$) agreement groups. The primary outcome was a composite of all-cause mortality or heart failure rehospitalization at 1 year. The low agreement group had more comorbidities and a higher prevalence of a history of heart failure. The agreement was good for diabetes ($\kappa = 0.73$), moderate for malignancy ($\kappa = 0.56$) and stroke ($\kappa = 0.50$), and poor-to-fair for hypertension ($\kappa = 0.33$), COPD ($\kappa = 0.25$), and CAD ($\kappa = 0.30$). The fair and low agreement groups had poorer outcomes than the good agreement group [fair agreement group: hazard ratio (HR): 1.25; 95% confidence interval (CI): 1.01–1.56; $P = 0.041$; low agreement group: HR: 2.74; 95% CI: 1.40–5.35; $P = 0.003$].

Conclusions The ability to recognize their own comorbidities among older patients with heart failure was low. Patients with less accurate recognition of their comorbidities may be at higher risk for a composite of all-cause mortality or heart failure rehospitalization.

Keywords Acute heart failure; Elderly; Questionnaire; Comorbidities; Agreement; Prognosis

Received: 29 June 2021; Revised: 30 November 2021; Accepted: 14 January 2022

*Correspondence to: Yuya Matsue, MD, PhD, Department of Cardiovascular Biology and Medicine, Juntendo University Graduate School of Medicine, 2-1-1 Hongo, Bunkyo-ku, Tokyo 113-8421, Japan. Tel: +81-3-3813-3111; Fax: +81-3-5689-0627. Email: yuya8950@gmail.com

Trial registration: University Hospital Information Network (UMIN-CTR: UMIN000023929).

Introduction

Heart failure is one of the leading global causes of public health concerns and mortality. As heart failure is strongly associated with older age, cardiac and non-cardiac comorbidities are prevalent in patients with heart failure.^{1–3} Recent studies have reported that the number of comorbidities in patients with heart failure increases over time and that the presence of more comorbidities is associated with higher mortality.⁴

Patient education is key to prevent disease progression and provide better disease management. The American College of Cardiology Foundation and the American Heart Association guidelines and European Society of Cardiology guidelines for heart failure recommend providing adequate patient education that allows the patient to better understand heart failure as a disease and perform self-care, including symptom monitoring.^{5,6} The understanding and recognition of one's own comorbidities is an essential and fundamental aspect of patient education.⁷ Studies on the general population,^{1–3,8,9} patients with cancer,^{10–12} and patients with chronic kidney disease^{13,14} have reported that patients do not necessarily recognize their own comorbid conditions that are recorded in their medical records and that the agreement between self-reported and provider-reported comorbidities is generally poor. The accuracy of self-reported comorbidities among patients with heart failure has not been reported. A poor understanding or recognition of comorbid conditions may be associated with a poor prognosis, based on previous studies that have suggested that better self-care behaviour reduces heart failure hospitalizations and the mortality rate in patients with heart failure^{15,16}; however, study has investigated the association between the patient's awareness of his or her own comorbidities and the prognosis in any patient population. Therefore, in this study, we investigated the agreement between self-reported and provider-reported comorbidities, the predictive factors for the disagreement between the reported comorbidities, and the association between the agreement and prognosis in older patients with heart failure.

Methods

Study design

This study is a post hoc analysis of data from the FRAGILE-HF study, which was a prospective, multicentre, observational study that evaluated the prevalence and prognostic value of physical, social, and cognitive frailty in older patients hospitalized for heart failure. The detailed study design and results of the FRAGILE-HF study have been published elsewhere.^{17–19} In brief, 1332 patients aged ≥ 65 years hospitalized for heart

failure, who could walk alone at discharge, were enrolled from 15 hospitals in Japan between September 2016 and March 2018. The diagnosis of heart failure was based on the Framingham criteria.²⁰ Patients with a previous heart transplantation or left ventricular assist device implantation, chronic peritoneal dialysis or haemodialysis, or acute myocarditis were excluded.

This study was conducted according to the principles of the Declaration of Helsinki and the Japanese Ethical Guidelines for Medical and Health Research involving Human Subjects. All patients were notified regarding their participation in our study and were provided the opportunity to opt out. As this was an observational study without invasive interventions, written informed consent was not required, as per the Ethical Guidelines for Medical and Health Research Involving Human Subjects, issued by the Japanese Ministry of Health, Labor, and Welfare. The study protocol was approved by the Sakakibara Heart Institution of Okayama Research Ethics Committee. The study information such as aims, inclusion and exclusion criteria, primary endpoint, and participating hospitals have been published in the publicly available University Hospital Information Network (UMIN-CTR, unique identifier: UMIN000023929).

Data collection

Physical examination, echocardiography, blood tests, and oral medication data were collected when the patients were in a clinically compensated state, prior to discharge. A history of heart failure was defined as having been diagnosed with heart failure before index hospitalization. Cognitive function was evaluated using the Mini-Cog test, on which scores ≤ 2 points were defined as cognitive dysfunction.²¹

In the FRAGILE-HF study, the investigators reported the presence or absence of six comorbidities (hypertension, diabetes, cancer, chronic lung disease, coronary artery disease, and stroke) for all patients on a case report form (CRF). These six comorbidities are included in the Frail Scale questionnaire^{19,22} as the following question: 'Did a doctor ever tell you that you have [disease]?'^{22,23} All patients in the FRAGILE-HF study completed the Frail Scale questionnaire.

Outcomes

One-year outcomes were prospectively collected in the FRAGILE-HF study. The predetermined primary outcome included all-cause mortality and heart failure rehospitalization, which was defined according to the American College of Cardiology/American Heart Association Key Data Elements and Definitions for Cardiovascular Endpoint Events in Clinical Trials.²⁴ Most study patients were followed up as outpatients

in clinics at least every 3 months and as medically needed. For patients who did not attend outpatient follow-up visits, clinical outcomes were collected via telephone interviews, medical records from other medical institutions, or interviews with the patients' families.

Statistical analysis

Variables with normal distribution are presented as mean and standard deviation, and those with non-normal distribution are presented as median and interquartile range. Categorical variables are reported as numbers and percentages. Continuous data were compared using Student's *t*-tests or Mann–Whitney *U* tests, and categorical data were compared using χ^2 or Fisher's exact tests, as appropriate.

The agreement between the comorbidities reported by the patient and those included in the CRF was evaluated using Cohen's Kappa (κ) coefficient.²⁵ The classification of Landis and Koch was used to evaluate the agreement levels: poor-to-fair ($\kappa < 0.40$), moderate ($0.40 < \kappa \leq 0.60$), substantial ($0.60 < \kappa \leq 0.80$), and almost perfect ($0.80 < \kappa \leq 1.00$).²⁵ The sensitivity (correctly self-reported 'Yes'/CRF 'Yes'), specificity (correctly self-reported 'No'/CRF 'No'), positive predictive value (correctly self-reported 'Yes'/all self-reported 'Yes'), negative predictive value (correctly self-reported 'No'/all self-reported 'No'), false-positive (incorrectly self-reported 'Yes'/CRF 'No'), false-negative (incorrectly self-reported 'No'/CRF 'Yes'), and overall agreement (correctly self-reported 'Yes' and 'No'/all answers) were calculated using the CRF-based presence or absence of comorbidities as a gold standard. False-positives were defined as over-reporting and false-negatives as under-reporting. The agreement score was defined as the number of comorbidities with agreement between the patient's report and the CRF. The agreement score was calculated for each patient and used to determine how accurately the patients recognized their own comorbidities. The agreement score ranged from 0 to 6. The patients were divided into three groups according to the agreement score: low agreement group (agreement score, 1–2), fair agreement group (agreement score, 3–4), and high agreement group (agreement score, 5–6). Group differences were evaluated using one-way analysis of variance or the Kruskal–Wallis test for continuous variables, and χ^2 or Fisher's exact test for dichotomous variables, as appropriate.

Univariate and multivariable logistic regression analyses were used to identify patient characteristics related to the agreement of each comorbidity. A Kaplan–Meier analysis with a log-rank test was used to compare the prognosis between groups stratified by the agreement score into the following four groups: complete agreement (patients with agreement score of 6), patients with more under-reporting, patients with more over-reporting, and patients with equal

under-reporting and over-reporting. For example, patients who under-reported two comorbidities and over-reported one comorbidity were classified into the under-reporting group. Unadjusted and adjusted Cox proportional hazards analyses were performed to assess the association between clinical variables and prognosis. In adjusted Model 1, well-known prognostic factors for heart failure^{17,19} were adjusted for, including age, sex, body mass index, New York Heart Association class III or IV at discharge, current smoking status, systolic blood pressure, prior history of heart failure, hypertension, diabetes mellitus, atrial fibrillation, coronary artery disease, chronic obstructive pulmonary disease (COPD), estimated glomerular filtration rate, haemoglobin, serum albumin, serum sodium, log-transformed brain natriuretic peptide, left ventricular ejection fraction, angiotensin-converting enzyme inhibitor or angiotensin receptor blocker prescriptions, beta-blocker prescriptions, and mineralocorticoid receptor antagonist prescriptions. In adjusted Model 2, the variables in Model 1 and the number of comorbidities and cognitive dysfunction were accounted for as these have also been reported to be risk factors for prognosis in patients with heart failure.^{4,17}

Multiple imputation was used for the missing covariate data to construct multivariable Cox regression models. Twenty datasets were created using a chained-equations procedure.²⁶ Parameter estimates were obtained for each dataset and subsequently combined to produce an integrated result using the method described by Barnard and Rubin.²⁷

All analyses were performed using R software Version 3.1.2 (R Foundation for Statistical Computing, Vienna, Austria; ISBN: 3-900051-07-0, URL: <http://www.R-project.org>). Statistical significance was set at $P < 0.05$.

Results

Among the 1332 patients aged ≥ 65 years hospitalized for heart failure who were enrolled in the FRAGILE-HF study, 98 (7.4%) were excluded from this study due to missing data on the CRF or Frail Scale questionnaire. Therefore, the final analyses included 1234 patients, including 19 in the low agreement group, 376 in the fair agreement group, and 839 in the high agreement group. The patients' baseline characteristics are shown in *Table 1*. There were no differences in sex, left ventricular ejection fraction, oral medications, or laboratory data between the groups. More patients in the low agreement group had histories of diabetes, COPD, stroke, and heart failure. The number of comorbidities and the prevalence of cognitive dysfunction were lower in the high agreement group than in the other groups. The agreements of each comorbidity are described in *Table 2*. The κ coefficient levels were poor-to-fair for hypertension ($\kappa = 0.33$), COPD ($\kappa = 0.25$), and coronary artery disease ($\kappa = 0.30$); moderate

Table 1 Patient characteristics

	Low agreement group	Fair agreement group	High agreement group	P-value
	n = 19	n = 376	n = 839	
Age (years)	81 [74, 86]	82 [76, 87]	80 [74, 85]	<0.001
Male sex, n (%)	13 (68.4)	221 (58.8)	469 (55.9)	0.39
Living status, n (%)				0.65
Living with someone	16 (84.2)	276 (73.4)	638 (76.0)	
Living alone	3 (15.8)	84 (22.3)	174 (20.7)	
Living in a nursery home	0 (0)	16 (4.3)	27 (3.2)	
Currently smoking, n (%)	2 (10.5)	28 (7.5)	87 (10.4)	0.27
NYHA class III/IV, n (%)	4 (21.1)	48 (12.8)	121 (14.4)	0.50
Body mass index (kg/m ²)	20.5 (2.6)	21.4 (3.8)	21.4 (3.8)	0.60
Systolic blood pressure (mmHg)	112 (15)	113 (16)	114 (18)	0.46
Diastolic blood pressure (mmHg)	61 (9)	62 (11)	62 (11)	0.94
Heart rate (b.p.m.)	71 (11)	71 (14)	71 (14)	0.78
Left ventricular ejection fraction (%)	47 (16)	46 (17)	46 (17)	0.95
Atrial fibrillation, n (%)	14 (73.7)	174 (46.3)	355 (42.3)	0.014
Coronary artery disease, n (%)	7 (36.8)	165 (43.9)	263 (31.3)	<0.001
COPD, n (%)	7 (36.8)	68 (18.1)	58 (6.9)	<0.001
Diabetes, n (%)	11 (57.9)	150 (39.9)	275 (32.8)	0.007
Hypertension, n (%)	16 (84.2)	265 (70.5)	598 (71.3)	0.44
Malignancy, n (%)	3 (15.8)	68 (18.1)	110 (13.1)	0.066
Stroke, n (%)	8 (42.1)	79 (21.0)	77 (9.2)	<0.001
Number of comorbidities	2.7 (1.1)	2.1 (1.1)	1.6 (1.1)	<0.001
Cognitive dysfunction, n (%)	8 (42.1)	163 (43.6)	287 (34.4)	0.008
History of heart failure, n (%)				<0.001
None	6 (31.6)	138 (36.7)	411 (49.0)	
Less than 1.5 years	2 (10.5)	75 (19.9)	114 (13.6)	
More than 1.5 years	11 (57.9)	163 (43.4)	313 (37.4)	
Prescription at discharge, n (%)				
Loop diuretics	13 (68.4)	220 (58.5)	455 (54.2)	0.20
ACE-I/ARB	13 (68.4)	254 (67.6)	568 (67.7)	0.99
Beta-blocker	15 (78.9)	276 (73.4)	608 (72.5)	0.79
MRA	3 (15.8)	26 (6.9)	74 (8.8)	0.27
Laboratory data at discharge				
Haemoglobin (g/dL)	11.1 (1.2)	11.7 (1.9)	11.9 (2.1)	0.10
Albumin (g/dL)	3.5 (0.3)	3.4 (0.5)	3.5 (0.5)	0.29
Creatinine (mg/dL)	1.31 (0.63)	1.44 (0.94)	1.35 (0.78)	0.24
Blood urea nitrogen (mg/dL)	23 [20, 29]	27 [21, 37]	26 [19, 35]	0.15
Sodium (mEq/L)	138.8 (3.9)	138.9 (4.0)	139.0 (3.7)	0.88
Potassium (mEq/L)	4.4 (0.5)	4.4 (0.5)	4.4 (0.5)	0.80
BNP (pg/mL)	297.4 [101.7, 402.5]	282.7 [139.0, 493.7]	264.0 [132.4, 491.1]	0.71

ACE-I, angiotensin-converting enzyme inhibitor; ARB, angiotensin receptor blocker; BNP, brain natriuretic peptide; COPD, chronic obstructive pulmonary disease; MRA, mineralocorticoid receptor antagonist; NYHA, New York Heart Association. Variables are described as mean (standard deviation) or median [interquartile range].

Table 2 Agreement between self-reported and provider-reported comorbidities

	Kappa	95% CI	Sensitivity (%)	Specificity (%)	PPV (%)	NPV (%)	False negative (%)	False positive (%)	Overall agreement (%)
Hypertension	0.33	0.27–0.38	69.0	68.2	84.4	47.1	31.0	31.7	68.8
Diabetes	0.73	0.69–0.77	77.7	93.9	87.4	88.5	22.3	6.1	88.1
Malignancy	0.56	0.50–0.63	68.6	91.7	58.8	94.4	31.4	8.3	88.3
COPD	0.25	0.15–0.35	32.6	92.1	33.1	91.9	67.4	7.9	85.7
Coronary artery disease	0.30	0.25–0.36	61.0	70.4	53.1	76.6	39.0	29.6	67.1
Stroke	0.50	0.42–0.57	63.6	90.9	51.5	94.3	36.4	9.1	87.4

CI, confidence interval; COPD, chronic obstructive pulmonary disease; NPV, negative predictive value; PPV, positive predictive value.

for malignancy ($\kappa = 0.56$) and stroke ($\kappa = 0.50$); and substantial for diabetes mellitus ($\kappa = 0.73$). Overall, there was more under-reporting than over-reporting of all comorbidities except hypertension.

Older age was observed to be associated with lower levels of agreement for malignancy and coronary artery disease, and

a longer history of heart failure was associated with a lower level of agreement for hypertension and coronary artery disease (Supporting Information, *Table S1*). Cognitive dysfunction was also related to a lower level of agreement for hypertension. For 4/6 comorbidities, a greater number of comorbidities was associated with lower levels of agreement.

Among the 1234 study patients, 1210 (98.1%) were followed up until 1 year. The primary endpoint occurred in 402 patients (33.2%), including 10 patients (55.6%) in the low agreement group, 144 (39.3%) in the fair agreement group, and 248 (30.0%) in the high agreement group ($P < 0.001$, P for trend = 0.002). Hospitalization for heart failure was observed in 202 (24.5%) patients in the high agreement group, 119 (32.7%) in the fair agreement group, and 8 (47.2%) in the low agreement group ($P = 0.003$, P for trend < 0.001). All-cause mortality was observed in 88 (10.6%) patients in the high agreement group, 54 (14.8%) in the fair agreement group, and 3 (16.7%) in the low agreement group ($P = 0.108$, P for trend = 0.036) (Figure 1). Lower agreement was associated with a higher incidence of the primary endpoint (Figure 2) (log-rank: $P < 0.001$). This association was retained even after adjustment for other factors related to the primary outcome, including cognitive dysfunction and number of comorbidities (Table 3). Patients who under-reported or over-reported their comorbidities were more likely to have a poor prognosis than those in the complete agreement group (Supporting Information, Figure S1). Furthermore, no difference in prognosis was observed between patients who under-reported, over-reported, or equally under-reported and over-reported their comorbidities in adjusted Model 2 (Supporting Information, Table S2).

Discussion

The agreement between self-reported and provider-reported comorbidities is low among older patients with heart failure. The low agreement rate is more due to under-reporting than over-reporting by the patients. Patients with lower agree-

Figure 1 Event rates of all-cause death or heart failure rehospitalization. Lower agreement level was associated with higher incidence of each all-cause death or heart failure rehospitalization. ACD, all-cause death; HFH, heart failure rehospitalization.

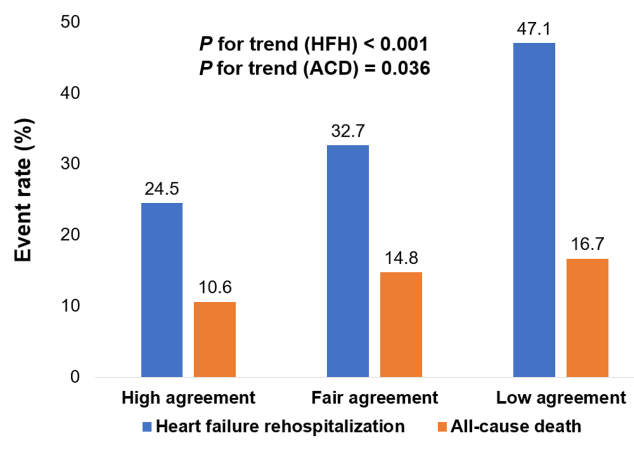
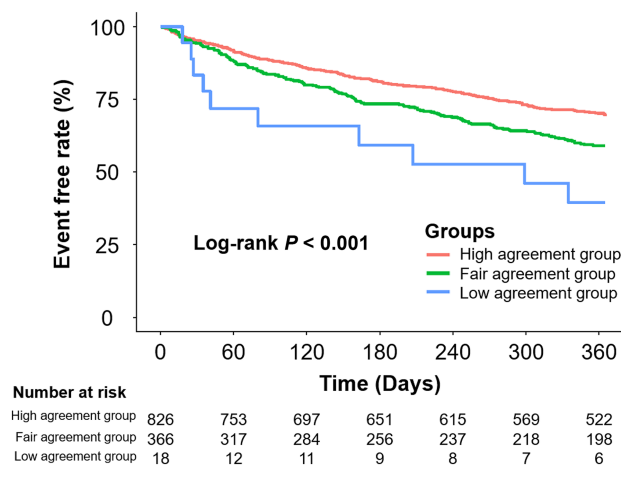


Figure 2 Kaplan–Meier curves for all-cause death or heart failure rehospitalization according to level of agreement. Patients were divided into three groups based on the agreement score for reported comorbidities. Patients with lower agreement scores had worse prognoses ($P < 0.001$).



ment levels had a higher incidence of primary outcomes independent of other covariates, including the number of comorbidities.

This is the first study to report that the agreement between self-reported and provider-reported comorbidities among older hospitalized patients with heart failure is generally poor. Though a direct comparison was not performed, the agreements of hypertension, diabetes mellitus, COPD, and coronary artery disease were numerically lower in patients with heart failure compared with the general elderly population,^{1–3} patients with cancer,^{10–12} and patients with chronic kidney disease,^{13,14} which may be due to a variety of reasons. As the FRAGILE-HF study focused on older patients with heart failure, the patient population in this study included older patients, and age is a strong predictor of disagreement between patient reports and medical records regarding the presence or absence of comorbidities.^{9,11,12,28} However, the cohorts evaluated in some previous studies were the same age or older than the patients included in this study.^{1–3} Therefore, heart failure itself might have contributed to the poor agreement observed in this study. The presence of cognitive dysfunction, which is strongly associated with heart failure, might have also contributed to the higher levels of disagreement in our study. A previous meta-analysis reported that patients with heart failure had a 1.67 times higher risk of cognitive impairment than patients without heart failure.²⁹ Cognitive dysfunction is likely to be associated with disagreement due to memory disorders or a lack of recognition. While 38% of the patients in this study had cognitive dysfunction, previous studies have either included very few patients with cognitive dysfunction,² excluded patients with cognitive dysfunction,³ or did not report the presence or absence of cognitive dysfunction.^{1,8–14,28} The number of

Table 3 Cox hazards proportional analysis for all-cause mortality or heart failure rehospitalization

	Unadjusted			Model 1 ^a			Model 2 ^b		
	HR	95% CI	P-value	HR	95% CI	P-value	HR	95% CI	P-value
High agreement group	1 (reference)			1 (reference)			1 (reference)		
Fair agreement group	1.43	1.17–1.76	<0.001	1.28	1.03–1.58	0.026	1.25	1.01–1.56	0.041
Low agreement group	2.60	1.38–4.89	0.003	2.81	1.44–5.48	0.002	2.74	1.40–5.35	0.003

CI, confidence interval; HR, hazard ratio.

^aModel 1: adjusted for age, sex, body mass index, New York Heart Association class III or IV, current smoking status, systolic blood pressure, history of heart failure, hypertension, diabetes, atrial fibrillation, coronary artery disease, chronic obstructive pulmonary disease, estimated glomerular filtration rate, haemoglobin, albumin, sodium, left ventricular ejection fraction, angiotensin-converting enzyme inhibitor or angiotensin receptor blocker prescription, beta-blocker prescription, mineralocorticoid receptor antagonist prescription, and log-transformed brain natriuretic peptide.

^bModel 2: adjusted for the variables listed in Model 1, cognitive dysfunction, and the number of comorbidities.

comorbidities may also be associated with disagreement. Patients with heart failure often have a high number of comorbidities. A clinical study on 122 630 patients with chronic heart failure reported that 39% had at least five comorbidities and 4% had no comorbidities.³⁰ An association between the number of comorbidities patients incorrectly recognize and the total number of comorbidities has been previously reported,^{1,2,28} which is consistent with the results of this study.

In this study, the agreement levels varied widely among the different comorbidities. One possible explanation for these results might be the clarity in the definition of the diseases. Although diabetes mellitus is explicitly defined based on the blood test results, the diagnosis of hypertension, COPD, and coronary artery disease is less than clear-cut. Blood pressure varies depending on the time or place (i.e. home or hospital), and there is insufficient awareness regarding hypertension.³¹ Similarly, the awareness rate of COPD is reportedly extremely low.³² Regarding stroke and cancer, stroke often has a sudden onset and causes severe and lasting disability, and both are the life-threatening diseases; therefore, these diagnoses have a significant impact on the patient in most cases. Further, the moderate agreement levels might be attributed to the increased awareness regarding these two diseases. Clinicians, nurses, and caregivers should make patients aware of their comorbidities, especially hypertension and COPD.

This is the first study to report a significant association between the accuracy of patient-reported comorbidities and patient prognosis in any patient population. The mechanism of this relationship is unclear; however, poor recognition of comorbidities may be associated with poor medication adherence. A retrospective study on 31 636 patients revealed poorer medication adherence in patients with more comorbidities.³³ Healthcare providers should explain patients' current medical conditions, including comorbidities, more adequately, especially to older patients with a history of heart failure, cognitive dysfunction, and a high number of comorbidities. As these patients are at high risk for the inaccurate recognition of their comorbidities, the patient's family or proxies should also be involved in patient educa-

tion. Moreover, pharmacist care and nurse practitioner education have been reported to improve knowledge of heart failure and clinical outcomes in patients with heart failure.^{34,35} The association between the accuracy of patient-reported comorbidities and patient prognosis may also be a result of the association between the number of comorbidities and prognosis. In this study, the results were consistent even after adjusting for several confounders. However, further studies are needed to fully determine the effects of these confounders.

In previous studies, the clinical effects of educational intervention on patients with heart failure have been examined. Due to the reportedly poor knowledge of medications among elderly patients,^{36,37} there may be room for intervention. One randomized controlled trial involving 223 patients with heart failure showed that educating patients regarding the cause of heart failure and rationale for heart failure medication by nurses reduced the incidences of death or rehospitalization.³⁸ In another randomized controlled trial on 200 hospitalized patients with heart failure, comprehensive care including education on diet, medication, and self-monitoring was associated with lower risk of heart failure rehospitalization.³⁹ However, this comprehensive care did not include education regarding the recognition of patients' comorbidities. Based on the results of our study, we believe that education on patients' comorbidities should be provided for patients with heart failure. However, as our opinion is not supported by substantial evidence, further studies are required to investigate the clinical efficacy of comprehensive care including education on patient's comorbidities.

This study is not without limitations. First, although several studies have reported that educational level is associated with the accordance or discordance of comorbidities between patient reports and medical records,^{9,12,28} data regarding the patients' educational levels were not available. Previous studies have shown that educational level is not associated with the accuracy of the recognition of comorbidities^{11,13}; however, this factor cannot be ruled out in this study. Second, the physician report was used as the gold standard in this study, though physicians may also misunderstand patients' comorbidities. Third, even though

healthcare utilization has shown to improve the outcomes in patients with heart failure,⁴⁰ we were unable to procure any data on healthcare utilization. Fourth, although we used the Mini-Cog test to evaluate cognitive dysfunction, its generalizability has been limited in patients with heart failure. Moreover, although we tried to evaluate cognitive dysfunction before discharge, hospitalized patients with acute heart failure may have temporary impaired cognitive function due to delirium or acute metabolic changes associated with heart failure, which might have impacted our study results. Fifth, objective assessment of the level of self-care in this study, such as the European Heart Failure Self-care Behavior Scale, was not evaluated. Moreover, whether the patients managed their medication by themselves or received help by their family/caregivers was not evaluated. Finally, this study included only Japanese patients; the generalizability of our findings may be limited.

In conclusion, patient-reported comorbidities were not accurate, and the poor recognition of comorbidities was associated with a poor prognosis in patients with heart failure.

Conflict of interest

Dr. Yuya Matsue and Takatoshi Kasai are affiliated with a department endowed by Philips Respironics, ResMed, Teijin Home Healthcare, and Fukuda Denshi, and Dr. Yuya Matsue received honorariums from Otsuka Pharmaceutical Co. and Novartis Japan. Dr. Kagiya reports grants from Philips, Asahi KASEI Corporation, Toho Holdings Co. Ltd, and Inter Reha Co. Ltd outside of the submitted work. Dr. Kamiya has

received research funding from Eiken Chemical Co. Ltd. The remaining authors have nothing to declare.

Funding

The FRAGILE-HF study was supported by Novartis Pharma Research Grants and a Japan Heart Foundation Research Grant. This work was also partially supported by Japan Society for the Promotion of Science (JSPS) KAKENHI (grant number 18K15862).

Supporting information

Additional supporting information may be found online in the Supporting Information section at the end of the article.

Figure S1. Kaplan–Meier curves for all-cause death or heart failure rehospitalization according to level of agreement. Patients were divided into four groups based on the level of agreement, as follows: complete agreement (agreement score of 6), more under-reporting, more over-reporting, or an equal number of under- and over-reporting. The complete agreement group had a longer event-free survival than the groups with disagreement.

Table S1. Logistic regression analysis for agreement.

Table S2. Cox hazards proportional analysis for all-cause death or heart failure re-hospitalization according to level of agreement.

References

- Hale MD, Santorelli G, Brundle C, Clegg A. A cross-sectional study assessing agreement between self-reported and general practice-recorded health conditions among community dwelling older adults. *Age Ageing* 2019; **49**: 135–140.
- Teh R, Doughty R, Connolly M, Broad J, Pillai A, Wilkinson T, Edlin R, Jatrana S, Dyal L, Kerse N. Agreement between self-reports and medical records of cardiovascular disease in octogenarians. *J Clin Epidemiol* 2013; **66**: 1135–1143.
- Ryden L, Sigstrom R, Nilsson J, Sundh V, Falk Erhag H, Kern S, Waern M, Ostling S, Wilhelmson K, Skoog I. Agreement between self-reports, proxy-reports and the National Patient Register regarding diagnoses of cardiovascular disorders and diabetes mellitus in a population-based sample of 80-year-olds. *Age Ageing* 2019; **48**: 513–518.
- Sharma A, Zhao X, Hammill BG, Hernandez AF, Fonarow GC, Felker GM, Yancy CW, Heidenreich PA, Ezekowitz JA, DeVore AD. Trends in noncardiovascular comorbidities among patients hospitalized for heart failure: insights from the Get With The Guidelines-Heart Failure Registry. *Circ Heart Fail* 2018; **11**: e004646.
- Writing Committee M, Yancy CW, Jessup M, Bozkurt B, Butler J, Casey DE Jr, Drazner MH, Fonarow GC, Geraci SA, Horwich T, Januzzi JL, Johnson MR, Kasper EK, Levy WC, Masoudi FA, McBride PE, McMurray JJ, Mitchell JE, Peterson PN, Riegel B, Sam F, Stevenson LW, Tang WH, Tsai EJ, Wilkoff BL, American College of Cardiology Foundation/American Heart Association Task Force on Practice G. 2013 ACCF/AHA guideline for the management of heart failure: a report of the American College of Cardiology Foundation/American Heart Association Task Force on practice guidelines. *Circulation* 2013; **128**: e240–e327.
- Ponikowski P, Voors AA, Anker SD, Bueno H, Cleland JGF, Coats AJS, Falk V, Gonzalez-Juanatey JR, Harjola VP, Jankowska EA, Jessup M, Linde C, Nihoyannopoulos P, Parissis JT, Pieske B, Riley JP, Rosano GMC, Ruilope LM, Ruschitzka F, Rutten FH, van der Meer P, Group ESCSD. 2016 ESC Guidelines for the diagnosis and treatment of acute and chronic heart failure: the Task Force for the diagnosis and treatment of acute and chronic heart failure of the European Society of Cardiology (ESC) Developed with the special contribution of the Heart Failure Association (HFA) of the ESC. *Eur Heart J* 2016; **37**: 2129–2200.
- Toback M, Clark N. Strategies to improve self-management in heart failure

- patients. *Contemp Nurse* 2017; **53**: 105–120.
8. Huerta JM, Tormo MJ, Egea-Caparrós JM, Ortola-Devesa JB, Navarro C. Accuracy of self-reported diabetes, hypertension and hyperlipidemia in the adult Spanish population. DINO study findings. *Rev Esp Cardiol* 2009; **62**: 143–152.
 9. Okura Y, Urban LH, Mahoney DW, Jacobsen SJ, Rodeheffer RJ. Agreement between self-report questionnaires and medical record data was substantial for diabetes, hypertension, myocardial infarction and stroke but not for heart failure. *J Clin Epidemiol* 2004; **57**: 1096–1103.
 10. Langballe R, John EM, Malone KE, Bernstein L, Knight JA, Lynch CF, Howell RM, Shore R, Woods M, Concannon P, Group WSC, Bernstein JL, Møller-Jensen L. Agreement between self-reported and register-based cardiovascular events among Danish breast cancer survivors. *J Cancer Surviv* 2018; **12**: 95–100.
 11. Ye F, Moon DH, Carpenter WR, Reeve BB, Usinger DS, Green RL, Spearman K, Sheets NC, Pearlstein KA, Lucero AR, Waddle MR, Godley PA, Chen RC. Comparison of patient report and medical records of comorbidities: results from a population-based cohort of patients with prostate cancer. *JAMA Oncol* 2017; **3**: 1035–1042.
 12. Merzenich H, Blettner M, Niehoff D, Schwentner L, Schmidt M, Schmitt M, Wollschlager D. Cardiac late events in German breast cancer patients: a validation study on the agreement between patient self-reports and information from physicians. *BMC Cardiovasc Disord* 2018; **18**: 218.
 13. Merkin SS, Cavanaugh K, Longenecker JC, Fink NE, Levey AS, Powe NR. Agreement of self-reported comorbid conditions with medical and physician reports varied by disease among end-stage renal disease patients. *J Clin Epidemiol* 2007; **60**: 634–642.
 14. Sridharan S, Berdeprado J, Vilar E, Roberts J, Farrington K. A self-report comorbidity questionnaire for haemodialysis patients. *BMC Nephrol* 2014; **15**: 134.
 15. Lee CS, Bidwell JT, Paturzo M, Alvaro R, Cocchieri A, Jaarsma T, Stromberg A, Riegel B, Vellone E. Patterns of self-care and clinical events in a cohort of adults with heart failure: 1 year follow-up. *Heart Lung* 2018; **47**: 40–46.
 16. McAlister FA, Stewart S, Ferrua S, McMurray JJ. Multidisciplinary strategies for the management of heart failure patients at high risk for admission: a systematic review of randomized trials. *J Am Coll Cardiol* 2004; **44**: 810–819.
 17. Matsue Y, Kamiya K, Saito H, Saito K, Ogasahara Y, Maekawa E, Konishi M, Kitai T, Iwata K, Jujo K, Wada H, Kasai T, Nagamatsu H, Ozawa T, Izawa K, Yamamoto S, Aizawa N, Yonezawa R, Oka K, Momomura SI, Kagiya N. Prevalence and prognostic impact of the coexistence of multiple frailty domains in elderly patients with heart failure: the FRAGILE-HF cohort study. *Eur J Heart Fail* 2020; **22**: 2112–2119.
 18. Tanaka S, Kamiya K, Saito H, Saito K, Ogasahara Y, Maekawa E, Konishi M, Kitai T, Iwata K, Jujo K, Wada H, Kasai T, Hamazaki N, Nozaki K, Nagamatsu H, Ozawa T, Izawa K, Yamamoto S, Aizawa N, Wakaume K, Oka K, Momomura SI, Kagiya N, Matsue Y. Prevalence and prognostic value of the coexistence of anaemia and frailty in older patients with heart failure. *ESC Heart Fail* 2021; **8**: 625–633.
 19. Nozaki K, Kamiya K, Hamazaki N, Saito H, Saito K, Ogasahara Y, Maekawa E, Konishi M, Kitai T, Iwata K, Jujo K, Wada H, Kasai T, Nagamatsu H, Ozawa T, Izawa K, Yamamoto S, Aizawa N, Makino A, Oka K, Momomura SI, Kagiya N, Matsue Y. Validity and utility of the questionnaire-based FRAIL scale in older patients with heart failure: findings from the FRAGILE-HF. *J Am Med Dir Assoc* 2021; **22**: 1621–1626.
 20. McKee PA, Castelli WP, McNamara PM, Kannel WB. The natural history of congestive heart failure: the Framingham study. *N Engl J Med* 1971; **285**: 1441–1446.
 21. Borson S, Scanlan J, Brush M, Vitaliano P, Dokmak A. The Mini-Cog: a cognitive ‘vital signs’ measure for dementia screening in multi-lingual elderly. *Int J Geriatr Psychiatry* 2000; **15**: 1021–1027.
 22. Woo J, Yu R, Wong M, Yeung F, Wong M, Lum C. Frailty screening in the community using the FRAIL scale. *J Am Med Dir Assoc* 2015; **16**: 412–419.
 23. Laur CV, McNicholl T, Valaitis R, Keller HH. Malnutrition or frailty? Overlap and evidence gaps in the diagnosis and treatment of frailty and malnutrition. *Appl Physiol Nutr Metab* 2017; **42**: 449–458.
 24. Hicks KA, Tchong JE, Bozkurt B, Chaitman BR, Cutlip DE, Farb A, Fonarow GC, Jacobs JP, Jaff MR, Lichtman JH, Limacher MC, Mahaffey KW, Mehran R, Nissen SE, Smith EE, Targum SL. 2014 ACC/AHA key data elements and definitions for cardiovascular endpoint events in clinical trials: a report of the American College of Cardiology/American Heart Association Task Force on Clinical Data Standards (Writing Committee to Develop Cardiovascular Endpoints Data Standards). *J Am Coll Cardiol* 2015; **66**: 403–469.
 25. Landis JR, Koch GG. The measurement of observer agreement for categorical data. *Biometrics* 1977; **33**: 159–174.
 26. van Buuren S, Boshuizen HC, Knook DL. Multiple imputation of missing blood pressure covariates in survival analysis. *Stat Med* 1999; **18**: 681–694.
 27. Barnard J, Rubin DB. Small-sample degrees of freedom with multiple imputation. *Biometrika* 1999; **86**: 948–955.
 28. Hoffmann J, Haastert B, Brune M, Kalthauer M, Begun A, Chernyak N, Icks A. How do patients with diabetes report their comorbidities? Comparison with administrative data. *Clin Epidemiol* 2018; **10**: 499–509.
 29. Cannon JA, Moffitt P, Perez-Moreno AC, Walters MR, Broomfield NM, McMurray JJV, Quinn TJ. Cognitive impairment and heart failure: systematic review and meta-analysis. *J Card Fail* 2017; **23**: 464–475.
 30. Braunstein JB, Anderson GF, Gerstenblith G, Weller W, Niefeld M, Herbert R, Wu AW. Noncardiac comorbidity increases preventable hospitalizations and mortality among Medicare beneficiaries with chronic heart failure. *J Am Coll Cardiol* 2003; **42**: 1226–1233.
 31. Fenech G, Vallee A, Cherfan M, Kab S, Goldberg M, Zins M, Blacher J. Poor awareness of hypertension in France: the CONSTANCES population-based study. *Am J Hypertens* 2020; **33**: 543–551.
 32. Fang L, Gao P, Bao H, Tang X, Wang B, Feng Y, Cong S, Juan J, Fan J, Lu K, Wang N, Hu Y, Wang L. Chronic obstructive pulmonary disease in China: a nationwide prevalence study. *Lancet Respir Med* 2018; **6**: 421–430.
 33. Rolnick SJ, Pawloski PA, Hedblom BD, Asche SE, Bruzek RJ. Patient characteristics associated with medication adherence. *Clin Med Res* 2013; **11**: 54–65.
 34. Schumacher PM, Becker N, Tsuyuki RT, Griesse-Mammen N, Koshman SL, McDonald MA, Bouvy M, Rutten FH, Laufs U, Böhm M, Schulz M. The evidence for pharmacist care in outpatients with heart failure: a systematic review and meta-analysis. *ESC Heart Fail* 2021; **8**: 3566–3576.
 35. Rice H, Say R, Bethavas V. The effect of nurse-led education on hospitalisation, readmission, quality of life and cost in adults with heart failure. A systematic review. *Patient Educ Couns* 2018; **101**: 363–374.
 36. Bosch-Lenders D, Maessen DW, Stoffers HE, Knottnerus JA, Winkens B, van den Akker M. Factors associated with appropriate knowledge of the indications for prescribed drugs among community-dwelling older patients with polypharmacy. *Age Ageing* 2016; **45**: 402–408.
 37. Custodis F, Rohlehr F, Wachter A, Böhm M, Schulz M, Laufs U. Medication knowledge of patients hospitalized for heart failure at admission and after discharge. *Patient Prefer Adherence* 2016; **10**: 2333–2339.
 38. Koelling TM, Johnson ML, Cody RJ, Aaronson KD. Discharge education improves clinical outcomes in patients with

- chronic heart failure. *Circulation* 2005; **111**: 179–185.
39. Kimmelstiel C, Levine D, Perry K, Patel AR, Sadaniantz A, Gorham N, Cunnie M, Duggan L, Cotter L, Shea-Albright P, Poppas A, LaBresh K, Forman D, Brill D, Rand W, Gregory D, Udelson JE, Lorell B, Konstam V, Furlong K, Konstam MA. Randomized, controlled evaluation of short- and long-term benefits of heart failure disease management within a diverse provider network: the SPAN-CHF trial. *Circulation* 2004; **110**: 1450–1455.
40. Li Y, Fu MR, Luo B, Li M, Zheng H, Fang J. The effectiveness of transitional care interventions on health care utilization in patients discharged from the hospital with heart failure: a systematic review and meta-analysis. *J Am Med Dir Assoc* 2021; **22**: 621–629.